



fx Alka line

OWNER MANUAL

GB

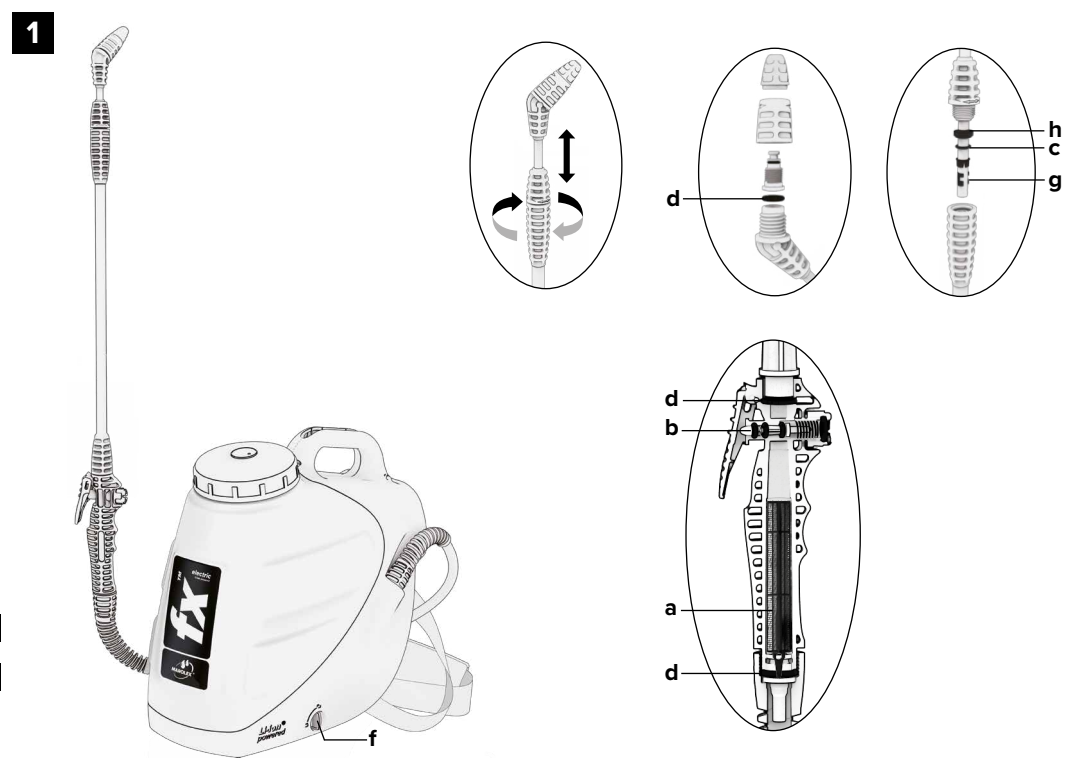
BETRIEBSANLEITUNG

DE

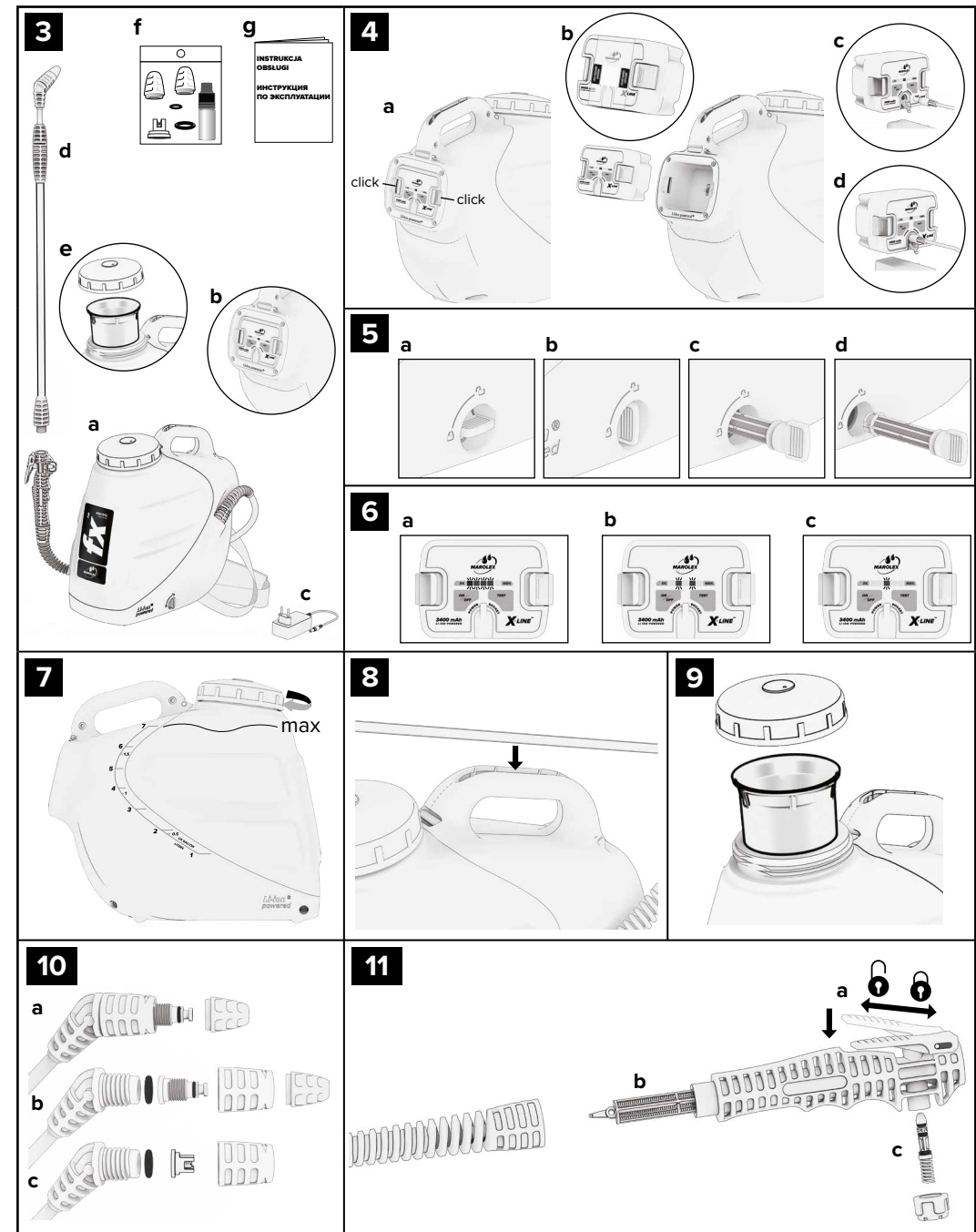
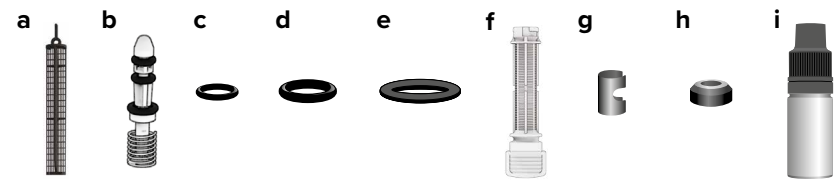
BATTERY SPRAYER

AKKU-SPRÜHGERÄT

STAMP OF THE RETAILER AND THE DATE STEMPEL UND DATUM DES VERKAUFERS	DESCRIPTION OF THE FAULT BESCHREIBUNG DES DEFEKTS		
GARANTEE CARD GARANTIEKARTE	DATE OF THE REPAIR DATUM DER REPARATUR		



2 REPAIR KIT X LINE / REPARATURSATZ X LINE Z08x



GB OWNER MANUAL

FX Alka line battery sprayer

1. APPLICATION AND USE

Battery sprayer FX Alka line is designed for the application of mild detergents and cleaning agents with a neutral or alkaline reaction. It is used in chemical industry, workshops and car washes. It is also used to eliminate contamination, disinfection and disinfection.

CAUTION !!! It is forbidden to use inorganic acids, including hydrochloric acid, alkalis, chlorinated disinfectants, including sodium hypochlorite, organic solvents, including ethyl acetate and other flammable liquids, and liquids in temperatures above 40 (C), viscous and thick liquids, and solutions that leave sediment. In case of doubt about the application of chemical agent, please contact our service by e-mail: kontrola@marolex.pl

Failure to follow this instruction may result in the loss of the warranty, damage to the sprayer or permanent harm to health.

2. EQUIPMENT OF THE FX ALKA LINE SPRAYER

The set contained in the package is presented in Fig. 3. a. Container with belt, hose with springs and feeding valve integrated with handle, b. Battery pack 3,4Ah with control package, c. Charger 12,6V; 3A for charging the package, d. Telescopic lance with adjustable nozzle MR 1,5 mm, e. Funnel with strainer, f. Spare nozzles: round nozzle MR 1.0, MR 2.0, flat stream nozzle MF 3.0 and additional gaskets: Fig. 1c., Fig. 1d. and silicone grease, g. User's manual with a warranty card, EU DECLARATION OF CONFORMITY

Marolex Sp. z o.o. reserves the right to change the equipment of the sprayer.

3. PREPARATION AND OPERATION OF THE FX ALKA LINE SPRAYER

1. Before you start working with the sprayer, read these operating instructions.
2. Before starting work, prepare sprayer and check the tightness and correct operation of the sprayer using clean water. For this purpose, fix the lance with the feeding valve integrated with the handle Fig. 1., remove the battery pack with the control panel Fig. 4b., remove the safety foil Fig. 4b. and insert the package so that the click sound is heard Fig. 4a., then check the battery charge level by pressing the TEST button Fig. 6a. The LED indicators on the panel will light up, showing the level of charging. Before pouring water, make sure that the pump filter Fig. 1f. is properly inserted and locked Fig. 5a. Unscrew the tank nut Fig. 7., pour clean water and screw the nut. Press the button ON/OFF on the control panel Fig. 6a., the diodes will start to flash Fig. 6a, b, c., press the feeding valve button Fig. 11a. from the nozzle, air should first come out, then water.

3. In order to start working with the sprayer: empty the tank from water, then pour in solution prepared in advance according to the producer recommendation, don't exceed the level indicated on the scale Fig. 7., tighten the tank nut Fig. 7. Press the button ON/OFF on the control panel Fig. 6a., extend the telescopic lance Fig. 1e., and then direct the lance to the place where spray will be carried out and press the feeding valve button Fig. 11a., start spraying. Continuous sprayer operation is possible by pressing the feeding valve button and moving it forward Fig. 11a. After finishing work, release the feeding valve lock by moving the button backwards. Fig. 11a. and switch the control package off with the ON/OFF button Fig. 6a.

4. Nozzle replacement:
- replacement of a cone 1.5 mm (white) nozzle with 1.0 mm (green) nozzle. To do this, unscrew the white nozzle cap and screw the green nozzle cap Fig. 10a.
- replacement of the cone nozzle with a flat-stream nozzle. To do this, unscrew the nozzle cap Fig. 10a., then unscrew the black nut, take out the core and O-ring Fig. 10b., insert the flat-stream nozzle into the black nut Fig. 10c., then insert the O-ring and tighten.
5. The battery pack 3.4Ah with the control panel is an exchangeable element available in the sales offer.

CAUTION! Removing the filter Fig. 1f. will cause liquid flowing out of the tank.

4. CHARGING THE BATTERY

In order to charge the battery, stick the included charger into the charging socket in the control package Fig. 4c., and then connect it to the power supply 230V 50 Hz. It is possible to charge the battery when the package is in the sprayer, as well as independently outside the sprayer. After connecting the charger, the diodes will start to flash, the charging cycle is in progress. Fig. 6. The battery is fully charged when all the LED indicators are on. If the battery has a low level of charging and only the red indicator light is on, it means that the sprayer battery needs to be charged before starting work. Charging should be stopped only when the battery is fully charged. The sprayer should be stored with a charged battery, what should be periodically checked by pressing the TEST button Fig. 6a. Prolonged storage of the sprayer with a discharged battery may damage the battery.

WARNING! The control package can be charged only with the included charger or 12.6V, 3A charger. If you try to use the charger with other parameters, the panel may be permanently damaged or the battery will not get charged.

It is recommended to use FX Alka line sprayer for one group of chemical substances. The sprayer once used for chemicals, can not be used for other purposes !!!

5. WORK SAFETY REGULATIONS

- Children, pregnant women, people taking medicines or other drugs restricting the concentration powers or drinking alcohol are forbidden to operate the sprayer.
- Before first spraying check the tightness and correct operation of the sprayer using clean water.
- When working with chemicals (also during liquid preparation and destroying the packages) it is necessary to wear protective clothing (rubber boots, gloves, a coat,

- a cap and a mask).
- It's forbidden to work with chemicals on an empty stomach and eat or drink during working. It's forbidden to drink alcohol one day before and one day after working with chemicals.
- It's forbidden to pour the liquid remains to the open water reservoirs or biological sewage treatment plants. These notes apply also to the water after cleansing the container and other parts of the sprayer.
- Expendable sprayer should be handed over for utilization.
- 6a. The used battery pack with the control panel should be given to a collection point for used electrical and electronic equipment and batteries.
- People working using the sprayer should strictly comply to all the recommendations on the package of the spraying agents. In case of poisoning the doctor must be contacted.
- It's forbidden to work using defective sprayer or with any leakage. Do not expose the sprayer to impact.
- All the operations should be done after decompression of the sprayer.
- Thoroughly cleanse the sprayer after each using and before servicing.
- It's forbidden to use the sprayer for other purposes than stipulated in the owner manual.
- It's forbidden to store the sprayer filled with a liquid and under pressure.
- It's forbidden to spray with liquids warmer than +40°C, and with easy inflammable chemicals or substances which can cause an explosion e.g. petrol, solvents.
- Changes in the sprayer or using it not according to its allocation can result in poisoning people or animals, polluting the environment, damaging the sprayer or serious accidents.
- After finishing work, you should change your clothes (the protective clothes must be cleaned), wash your hands, face, mouth and throat, and clean your nose.
- After finishing work, rinse the sprayer using clean water.
- The user is fully responsible for the damages caused by not complying with these recommendations.
- Always check the battery level before starting work.
- It's forbidden to point the lance of the sprayer and spray the liquid in the direction of the face.
- The sprayer while working and storing should be secured from any unauthorized people, especially children.
- When using other agents, make sure that it can be used in the sprayer, and that they are not harmful to the sprayer, people and the environment.
- CAUTION! The sprayer's control package is splash-proof and has a higher moisture level, is not resistant to flooding and frequent contact with water.**

6. SERVICE AND WARRANTY REPAIRS

- The guarantee period is 24 months from the date of purchase. The warranty excludes: pump with engine, control package with battery and charger, for which the warranty period is 12 months. The tank is covered by a 60-month warranty.
- Reclamation should be lodged to the seller of the sprayer.
- CAUTION! Dirty and contaminated with chemicals sprayers, supplied as a complaint, or sprayers with any content will not be repaired. Thoroughly empty, rinse and clean them beforehand!**
- The claims will be accepted after showing the defected part or giving the full description of the fault.
- The guarantee repairs should be made using always the genuine Marolex parts.
- Number of repairs after which the seller cannot refuse to exchange the sprayer for a new one (in case there are still defects) is 3.
- Operations connected with exploitation of the sprayer and described in the manual are not treated as guarantee repairs.
- The producer will not accept the claim if there were changes in pressure regulation or the storing, operating, maintaining of the product were not according to the manual.
- Mechanical damages caused by the user cannot be the subject to reclamation. The damaged parts can be exchanged but the costs are charged.
- The warranty does not cover damage resulting from the use of an unsuitable charger.**

7. STORAGE AND MAINTENANCE OF THE FX ALKA LINE SPRAYER

- Do not store the sprayer in sunlight or in temperatures below +4°C.
- After finishing work, thoroughly wash the sprayer using clean water and blow air through it. Perform maintenance periodically.** After washing the sprayer and blowing the air through it, you should: unscrew the hose from the handle, remove the filter Fig. 11b. and clean it under running water using a soft brush. Unscrew the nut from the feeding valve in the handle, take out the valve piston with a spring Fig. 11c., clean and lubricate it with silicone grease Fig. 21., put it back and tighten the nut. Unscrew the nozzle nut Fig. 10a. remove the nozzle and rinse it thoroughly with water, then lubricate with silicone grease O-ring Fig. 1d. Unlock and remove the pump filter Fig. 5a, b, c, d. and clean it under running water using a soft brush, then insert and lock Fig. 5a. (a small amount of liquid may flow out after removing the filter). Unscrew the tank nut Fig. 7., remove the funnel with strainer Fig. 9. and rinse with water, then put it back in the tank and screw the nut. Fig. 1. shows the diagram of the elements to be maintained or which are wasted and must be replaced by purchasing a repair kit Z08x Fig. 2. Instructional videos can be found on our website www.marolex.pl
- Maintenance and repairs should only be carried out with silicone grease. Using other lubricants will damage the sprayer. CAUTION! All repair, replacement or maintenance operations concerning the pump unit, battery and control package may only be carried out at the premises of Marolex company or authorized services. If you attempt to repair, replace or maintain above mentioned items, you lose your warranty.**

8. GENERAL REMARKS

In the lance handle integrated with the feeding valve is used filter R40 which has to prevent clogging of the nozzles. All lances produced by Marolex are interchangeable (the same thread in the feeding valve). It is possible to use additional Marolex extensions, manufactured in lengths of 60 and 100 cm. For Marolex sprayers fit cone, deflector, flat stream and adjustable nozzles. The construction of all Marolex lances allows the use of nozzles from other world nozzle producers.

